

**REQUIRED PARKING (CR ZONING)**

CONVENIENCE STORE (TABLE 119.12 SEC. 211)	1 SPACE PER 150 SQUARE FEET OF GROSS FLOOR AREA
RESTAURANT (TABLE 119.12 SEC. 81, 82, 83 & 84)	1 SPACE PER 100 SQUARE FEET OF GROSS FLOOR AREA
(8.1) - 1 SPACE PER 100 SQUARE FEET OF GROSS FLOOR AREA	
(8.2) - SAME AS (8.1) PLUS 1 SPACE FOR EACH FOUR OUTSIDE SEATS	
(8.3) - SEE ABOVE REQUIREMENT	
(8.4) - SAME AS (8.2) PLUS RESERVATION LINE CAPACITY TO 5 SPACES PER BAY-IN WINDOW	
TOTAL REQUIRED PARKING CALCULATION:	97 SPACES
CONVENIENCE STORE: 2,548 SF / 150 =	17 SPACES
RESTAURANT:	2 SPACES
TOTAL CONVENIENCE STORE:	19 SPACES
ACCESSIBLE PARKING:	2 SPACES
TOTAL CONVENIENCE STORE:	21 SPACES
RESTAURANT:	6 SPACES
ACCESSIBLE PARKING:	2 SPACES
TOTAL RESTAURANT:	8 SPACES
TOTAL REQUIRED PARKING:	108 SPACES

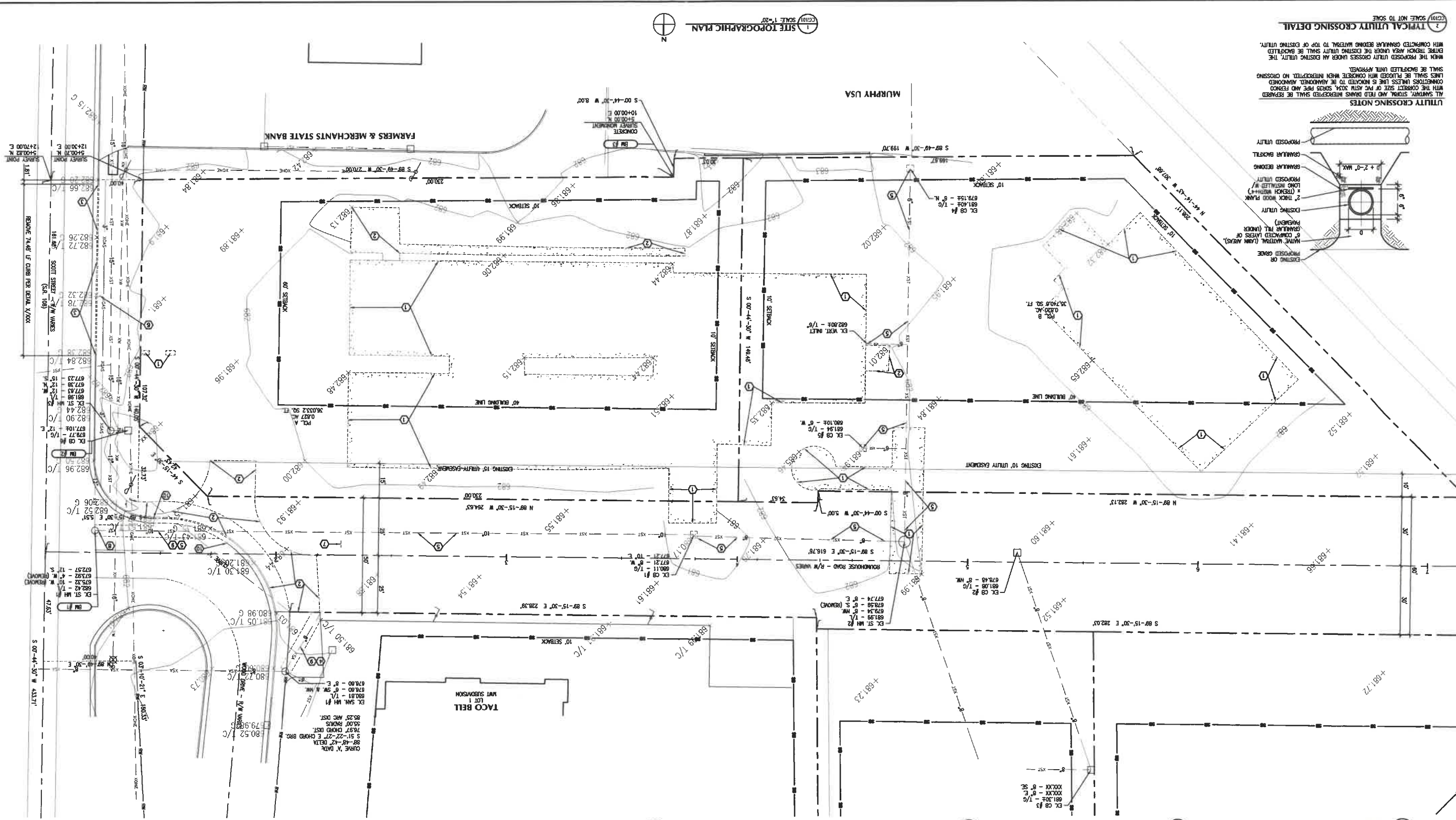
TOTAL CURVE "N" DATA: 497.08' ARC DIST.  
 05'-07'-22" DELTA  
 N 45°-21'-11" E CHORD BRG. 496.87' CHORD DIST.  
 01'-16'-25" DELTA  
 N 45°-20'-43" E CHORD BRG. 176.84' CHORD DIST.  
 5,559.59' RADIUS  
 176.86' ARC DIST.  
 CURVE SEGMENT "V" DATA: 497.08' ARC DIST.  
 01'-16'-25" DELTA  
 N 45°-20'-43" E CHORD BRG. 176.84' CHORD DIST.  
 5,559.59' RADIUS  
 176.86' ARC DIST.  
 CURVE "W" DATA: 83.55' ARC DIST.  
 76.97' CHORD DIST.  
 S 91°-22'-27" E CHORD BRG. 85.00' RADIUS  
 83.55' ARC DIST.  
 WMT SUBMISSION LOT 1  
 WMT SUBMISSION LOT 2  
 WMT SUBMISSION LOT 3

2021 BELHARTZ ARCHITECTS, INC.  
 ALL RIGHTS RESERVED. THIS DRAWING IS NOT BE LOANED, REPRODUCED, COPIED, OR IN ANY MANNER USED FOR ANY OTHER PROJECT. THE USER OF THIS DRAWING SHALL BE RESPONSIBLE FOR OBTAINING ALL NECESSARY PERMITS AND APPROVALS FROM THE APPLICABLE AGENCIES. BELHARTZ ARCHITECTS, INC. SHALL NOT BE RESPONSIBLE FOR ANY ERRORS OR OMISSIONS IN THIS DRAWING.

ISSUE DATE: 03-02-21 FOR REVIEW  
 03-17-21 FOR REVIEW  
 05-28-21 FOR CITY REVIEW  
 07-01-21 PERMIT DRAWINGS  
 08-13-21 STORM WATER MANHOLE

FOR SHEET SIZE 24"x36"  
 1" = 30'  
 0 15' 30' 45'  
 PLOT SCALE





**DEMOLITION NOTES**

1. LOCATE ALL EXISTING UNDERGROUND UTILITY LINES PRIOR TO CONSTRUCTION. CONSULT WITH UTILITY OWNERS PRIOR TO WORK. CONTACT UTILITY OWNERS FOR THE DISPOSITION OF OFF-SITE BY CONTRACTOR. ALL FEDERAL, STATE, LOCAL AND EPA BE DISPOSED OF OFF-SITE BY CONTRACTOR. MUST BE FOLLOWED WHEN DISPOSING OF MATERIALS.
2. OWNER SHALL RETAIN OWNERSHIP OF SALVAGEABLE MATERIALS AND EQUIPMENT TO THE EXTENT NOTED.
3. MATERIALS GENERATED BY DEMOLITION WHICH ARE NOT SALVAGED TO OWNER SHALL BE DISPOSED OF OFF-SITE BY CONTRACTOR. ALL FEDERAL, STATE, LOCAL AND EPA BE DISPOSED OF OFF-SITE BY CONTRACTOR. MUST BE FOLLOWED WHEN DISPOSING OF MATERIALS.
4. ALL REMOVED UTILITY LINES SHALL HAVE OPEN ENDS CAPPED OR PLUGGED WATER UNLESS NOTED OTHERWISE. ABANDONED LINE ENDS SHALL BE TIED TO THREE POINTS ON AS-BUILT DRAWING.
5. SURFACE AREAS DISTURBED BY DEMOLITION ACTIVITIES SHALL BE PROPERLY RECONSTRUCTED TO BE COMPATIBLE AND CONSISTENT WITH PLANNED IMPROVEMENTS.
6. CONTRACTOR SHALL AVOID AFFECT OF LINE AND GRADE OF ANY UTILITY ENCOUNTERED WHICH IS NOT SHOWN ON OR CONSISTENT WITH PROJECT PLANS. CONTACT PROJECT ARCHITECT OR UTILITY PROVIDER AS TO FINAL DISPOSITION OF THE UTILITY IN QUESTION.
7. FIELD VERIFY EXISTING CONDITIONS PRIOR TO SUBMITTING BID.

**BENCH MARK INFORMATION**

- BM #1 682.42 = TOP OF LID EX. MH #1
- BM #2 679.77 = TOP OF GRAVE EXISTING CATCH BASIN #6
- BM #3 681.74 = PAV. MONUMENT (1" BORN PBL. IN 6" CONCRETE)

**KEYNOTE LEGEND (DEMOLITION)**

- 1 REMOVE CONCRETE SLAB AND FOUNDATIONS INCLUDING GRAVEL.
- 2 REMOVE UPPER PORTION OF CURB BY SWINGING PER DETAIL 3/03101.
- 3 REMOVE SAND AND POST.
- 4 REMOVE ALL PIPE AND STRUCTURES AS NOTED.
- 5 REMOVE AND RELOCATE SIGN PER CITY OF NAPOLEON.
- 6 GROUT STRUCTURE AFTER PIPE REMOVAL.
- 7 REMOVE AND REPLACE PAVEMENT, PER DETAIL 4/03101.
- 8 PLACE 10" LF - TYPE 2 CURB AND GUTTER.

**UTILITY CROSSING NOTES**

ALL SANITARY, STORM AND FIELD DRAINAGE INTERCEPTED SHALL BE REPAIRED WITH THE CORRECT SIZE OF PVC AS PER LOCAL, STATE AND FEDERAL CONNECTIONS UNLESS LINE IS NOTICED TO BE ABANDONED. APPROVED LIMITS SHALL BE MAINTAINED THROUGHOUT THE PROJECT. WHEN THE PROPOSED UTILITY CROSSES UNDER AN EXISTING UTILITY, THE ENTIRE TRENCH AREA UNDER THE EXISTING UTILITY SHALL BE BACKFILLED WITH COMPACTED GRANULAR BEDDING MATERIAL TO TOP OF EXISTING UTILITY. SHALL BE BACKFILLED WITH APPROVED.

**1 TYPICAL UTILITY CROSSING DETAIL** SCALE: NOT TO SCALE

**2 PAVEMENT REPLACEMENT** SCALE: NOT TO SCALE

**3 SEWER TRENCH DETAIL** SCALE: NOT TO SCALE

**4 WATER LINE TRENCH DETAIL** SCALE: NOT TO SCALE

**5 STORM & SANITARY** SCALE: NOT TO SCALE

**6 TYPE 2 CURB/DRIVE** SCALE: NOT TO SCALE











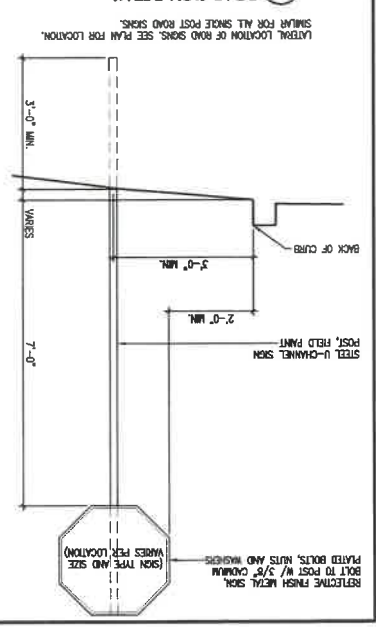
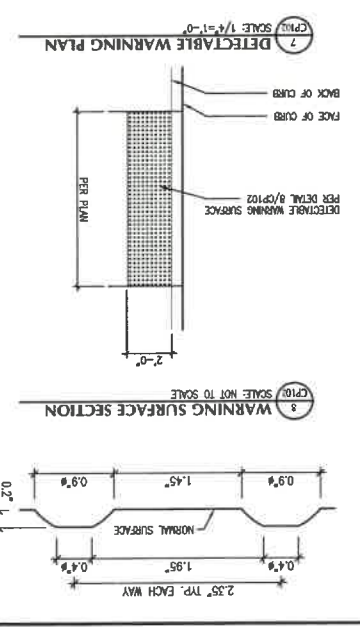
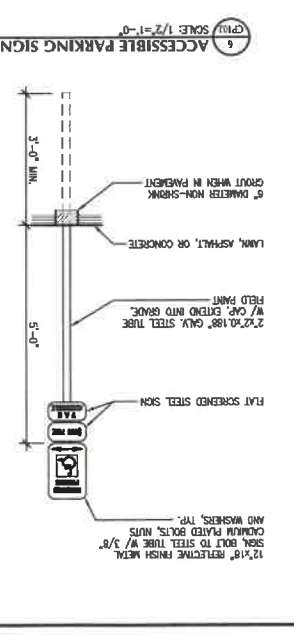
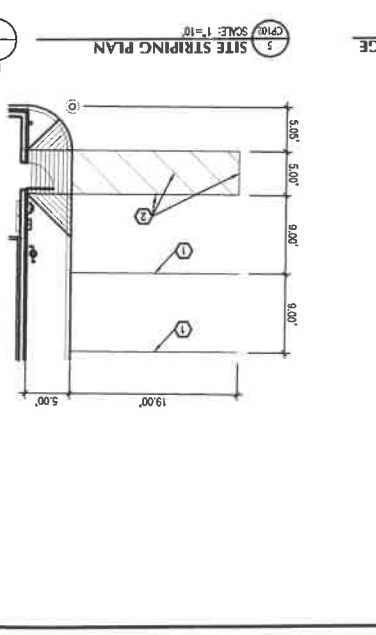
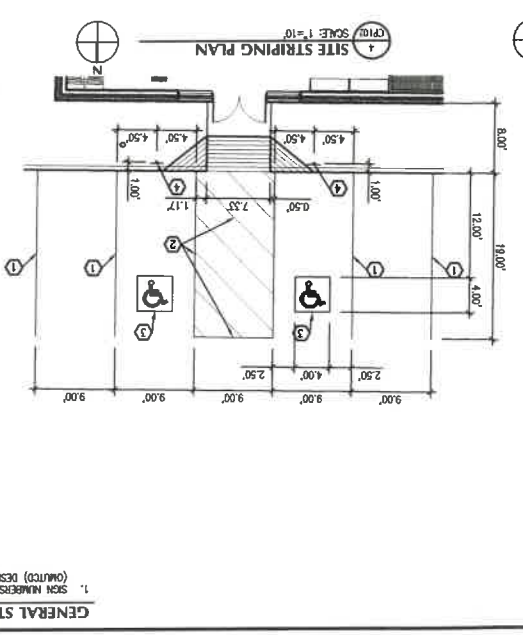
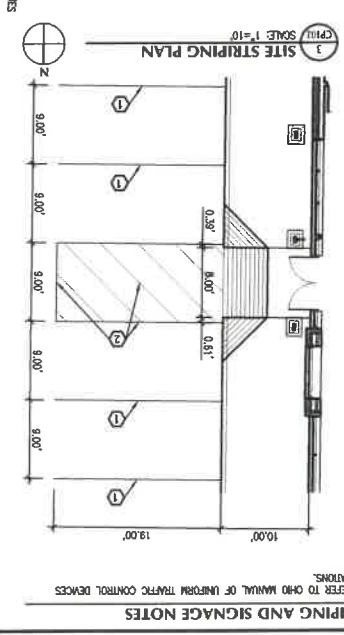
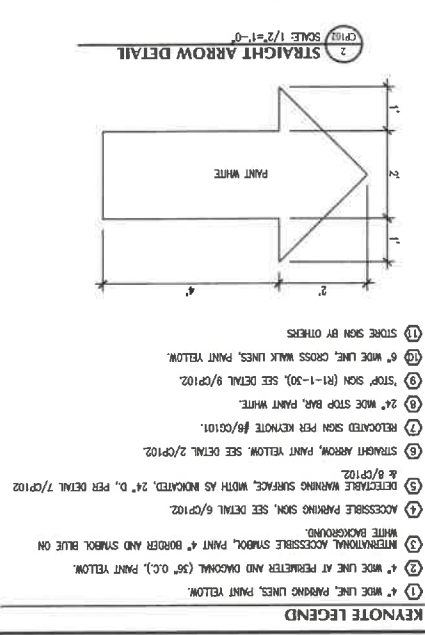
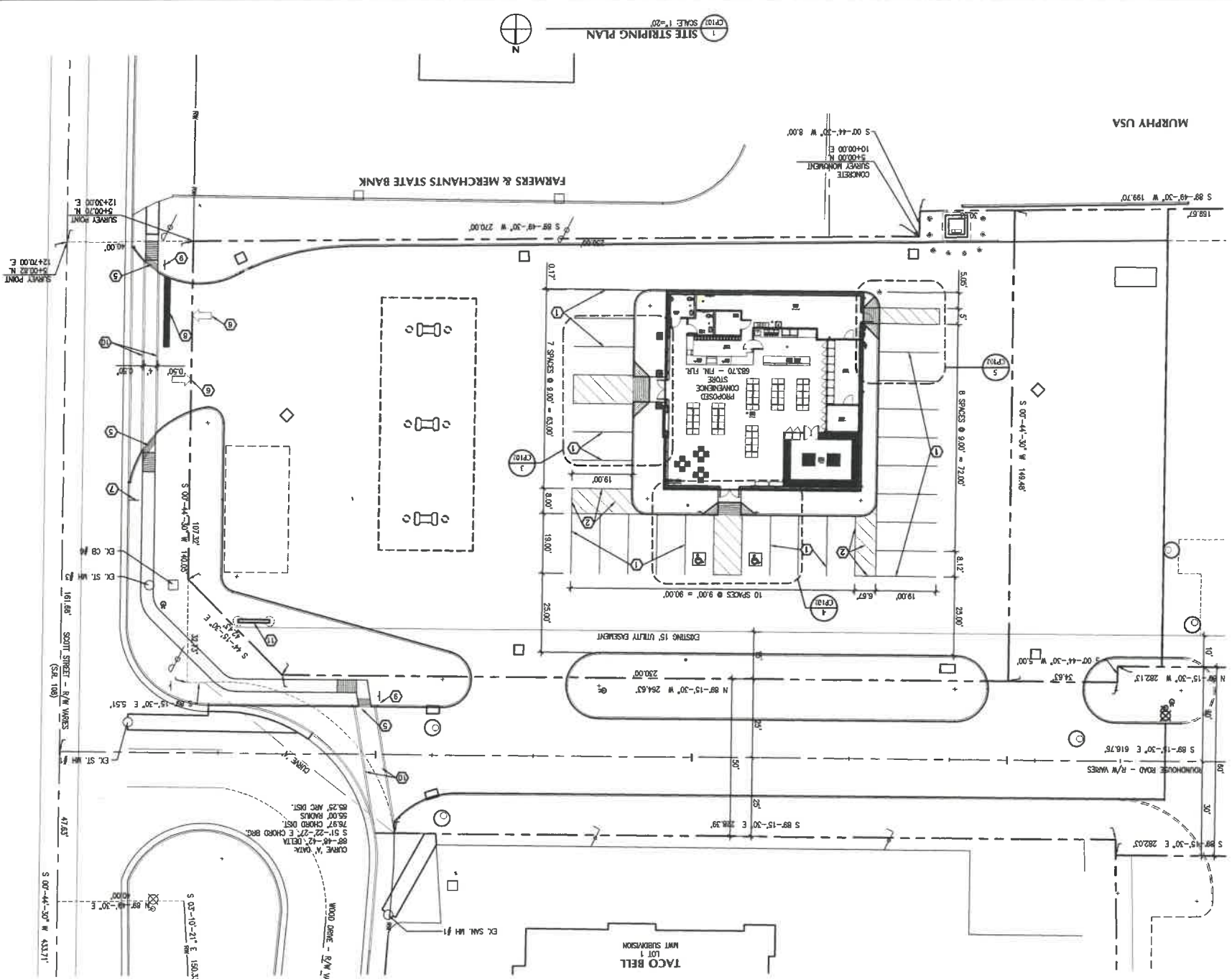
© 2021 BELLHARZ ARCHITECTS, INC.  
 THE OWNER OF THE PROJECT IS THE APPLICANT. THE APPLICANT HAS REPRESENTED THAT THE INFORMATION PROVIDED IS TRUE AND CORRECT. BELLHARZ ARCHITECTS, INC. IS NOT RESPONSIBLE FOR ANY ERRORS OR OMISSIONS THAT MAY OCCUR AS A RESULT OF THE APPLICANT'S NEGLIGENCE OR MISREPRESENTATION OF FACTS. THE APPLICANT HAS REPRESENTED THAT THE PROJECT IS NOT SUBJECT TO ANY OTHER PROJECTS, AND THAT THE PROJECT WILL BE COMPLETED IN ACCORDANCE WITH THE APPLICANT'S SCHEDULE. BELLHARZ ARCHITECTS, INC. IS NOT RESPONSIBLE FOR ANY ERRORS OR OMISSIONS THAT MAY OCCUR AS A RESULT OF THE APPLICANT'S NEGLIGENCE OR MISREPRESENTATION OF FACTS.

ISSUE DATE  
 05-28-21 FOR CITY REVIEW  
 07-01-21 PERMIT DRAWINGS  
 08-13-21  
 STORM WATER RUNOFF

FOR SHEET SIZE 24"x36"  
 1"=20'  
 10' 20' 30'

BELLHARZ ARCHITECTS INCORPORATED  
**B A**

REGISTERED ARCHITECT  
 STATE OF OHIO  
 9482  
 BELLHARZ ARCHITECTS, INC.  
 12/31/2021



**KEYNOTE LEGEND**  
 1. SIGN NUMBERS REFER TO OHIO MANUAL OF INSTRUCTIONS FOR TRAFFIC CONTROL DEVICES (OUMT) DESIGNATIONS.  
 2. WIDE LINE AT PERMETER AND DIAGONAL (35" O.C.), PAINT YELLOW.  
 3. INTERIOR ACCESSIBLE SYMBOL, PAINT 4" BORDER AND SYMBOL BLUE ON WHITE BACKGROUND.  
 4. WIDE LINE AT PERMETER AND DIAGONAL (35" O.C.), PAINT YELLOW.  
 5. ACCESSIBLE PARKING SIGN, SEE DETAIL 6/CP102.  
 6. DETECTABLE WARNING SURFACE, WITH AS INDICATED, 24" D, PER DETAIL 7/CP102 & 8/CP102.  
 7. RELOCATED SIGN PER KEYNOTE 8/CP102.  
 8. 24" WIDE STOP BAR, PAINT WHITE.  
 9. SIGN (R1-1-30), SEE DETAIL 9/CP102.  
 10. 6" WIDE LINE, CROSS WALK LINES, PAINT YELLOW.  
 11. STORE SIGN BY OTHERS.

MARK	STRUCTURE	CASTING	INVERT	ELEVATION	NOTES
EX SAN MH #1	4" DIAM.	880.81	878.60	878.60	VERIFY INV., REMOVE CORE & BOOT & SW.
SAN MH #1	ODOT #3	891.50	878.84	878.84	VERIFY INVERT
WYE #1	8"x8"	-	877.22	877.22	6" SW.
SAN MH #2	ODOT #3	882.30	877.14	877.14	6" SW.
WYE #2	6"x6"	-	877.25	877.25	6" SW.
CO #1	6" DIAM.	883.57	877.74	877.74	2 FROM FLOORING
CO #2	6" DIAM.	883.57	879.23	879.23	6" N.
EX MH #1	4" DIAM.	882.42	875.32	875.32	REMOVE 10" GROUT MH VERIFY INV., REMOVE CORE FOR 12" W.
MH #1	ODOT #3	881.16	877.15	877.15	12" W. & E.
MH #2	ODOT #3	882.07	877.30	877.30	12" W. & E.
MH #3	ODOT #3	882.57	878.40	878.40	12" W. & E.
MH #2	4" DIAM.	881.99	877.74	877.74	PLUG 12" W.
EX MH #1	4" DIAM.	880.98	877.42	877.42	6" S.
MH #1	2" CD101	881.02	877.15	877.15	12" N.
CI #1-2	2" CD101	881.02	877.46	877.46	6" N.
MH #4	ODOT #3	882.48	878.75	878.75	12" NE.
EX MH #1	4" DIAM.	881.71	879.18	879.18	12" SE & NW.
CB #1	ODOT 2-28 MOD.	881.70	879.20	879.20	12" S.
CB #2	ODOT 2-28 MOD.	882.20	879.28	879.28	4" S.
CB #3	ODOT 2-28 MOD.	882.00	879.48	879.48	4" S.
CB #4	ODOT 2-28 MOD.	881.74	879.88	879.88	4" W. & E.
CB #5	ODOT 2-28 MOD.	881.70	879.20	879.20	12" S.
CB #6	ODOT 2-28 MOD.	882.10	879.20	879.20	12" S.
CB #7	ODOT 2-28 MOD.	881.44	879.34	879.34	4" E. & W.
MH #5	ODOT #3	882.30	879.34	879.34	12" N.
CB #8	ODOT 2-28 MOD.	882.30	879.34	879.34	12" N.
CB #9	ODOT 2-28 MOD.	881.90	879.04	879.04	12" N.
CB #10	ODOT 2-28 MOD.	882.30	879.34	879.34	12" N.

**PROPOSED SANITARY STRUCTURE SCHEDULE**  
 MARK STRUCTURE CASTING INVERT ELEVATION NOTES  
 EX SAN MH #1 4" DIAM. 880.81 878.60 878.60 VERIFY INV., REMOVE CORE & BOOT & SW.  
 SAN MH #1 ODOT #3 891.50 878.84 878.84 VERIFY INVERT  
 WYE #1 8"x8" - 877.22 877.22 877.22 6" SW.  
 SAN MH #2 ODOT #3 882.30 877.14 877.14 6" SW.  
 WYE #2 6"x6" - 877.25 877.25 877.25 6" SW.  
 CO #1 6" DIAM. 883.57 877.74 877.74 2 FROM FLOORING  
 CO #2 6" DIAM. 883.57 879.23 879.23 6" N.  
 EX MH #1 4" DIAM. 882.42 875.32 875.32 REMOVE 10" GROUT MH VERIFY INV., REMOVE CORE FOR 12" W.  
 MH #1 ODOT #3 881.16 877.15 877.15 12" W. & E.  
 MH #2 ODOT #3 882.07 877.30 877.30 12" W. & E.  
 MH #3 ODOT #3 882.57 878.40 878.40 12" W. & E.  
 MH #2 4" DIAM. 881.99 877.74 877.74 PLUG 12" W.  
 MH #1 2" CD101 881.02 877.15 877.15 12" N.  
 CI #1-2 2" CD101 881.02 877.46 877.46 6" N.  
 MH #4 ODOT #3 882.48 878.75 878.75 12" NE.  
 EX MH #1 4" DIAM. 881.71 879.18 879.18 12" SE & NW.  
 CB #1 ODOT 2-28 MOD. 881.70 879.20 879.20 12" S.  
 CB #2 ODOT 2-28 MOD. 882.20 879.28 879.28 4" S.  
 CB #3 ODOT 2-28 MOD. 882.00 879.48 879.48 4" S.  
 CB #4 ODOT 2-28 MOD. 881.74 879.88 879.88 4" W. & E.  
 CB #5 ODOT 2-28 MOD. 881.70 879.20 879.20 12" S.  
 CB #6 ODOT 2-28 MOD. 882.10 879.20 879.20 12" S.  
 CB #7 ODOT 2-28 MOD. 881.44 879.34 879.34 4" E. & W.  
 MH #5 ODOT #3 882.30 879.34 879.34 12" N.  
 CB #8 ODOT 2-28 MOD. 882.30 879.34 879.34 12" N.  
 CB #9 ODOT 2-28 MOD. 881.90 879.04 879.04 12" N.  
 CB #10 ODOT 2-28 MOD. 882.30 879.34 879.34 12" N.

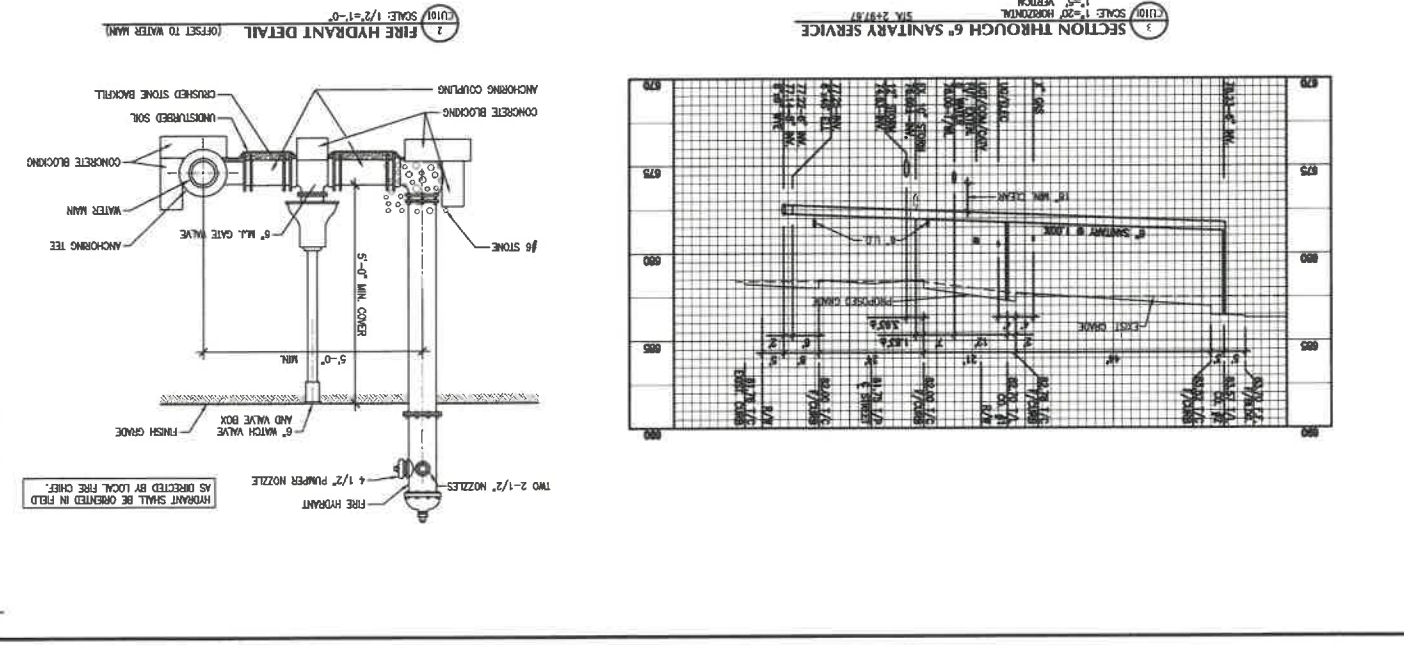
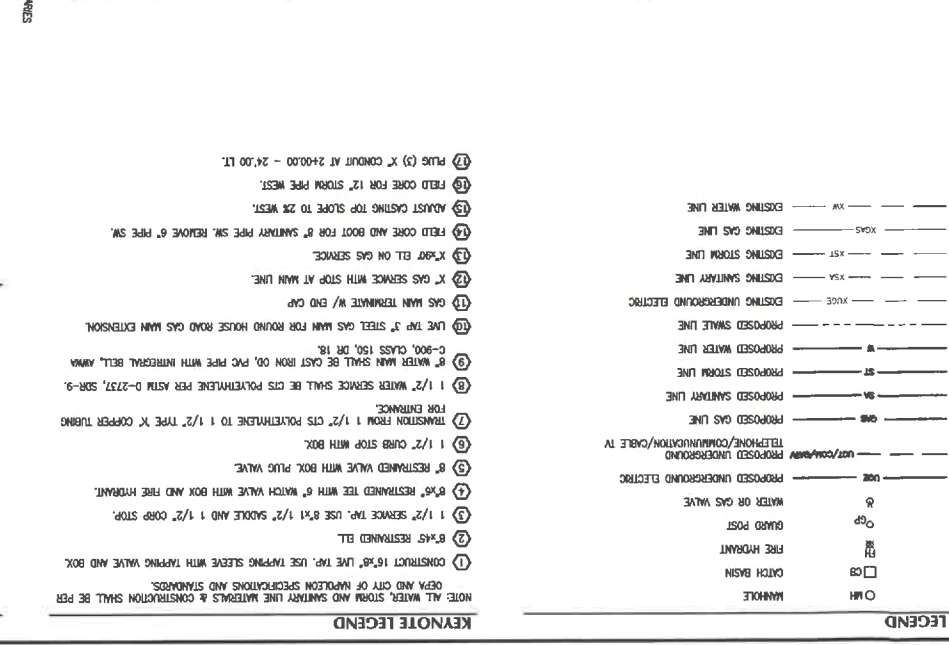
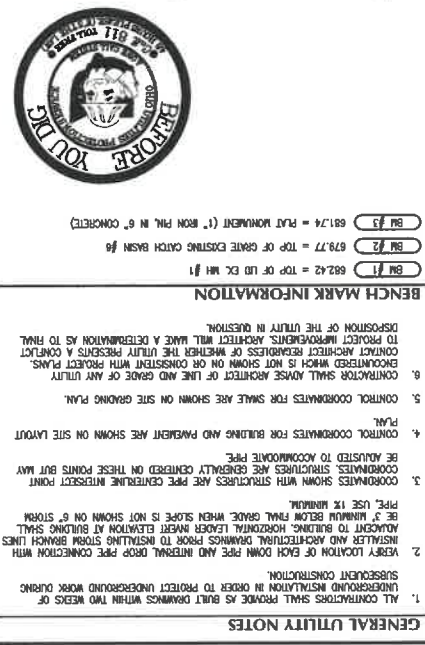
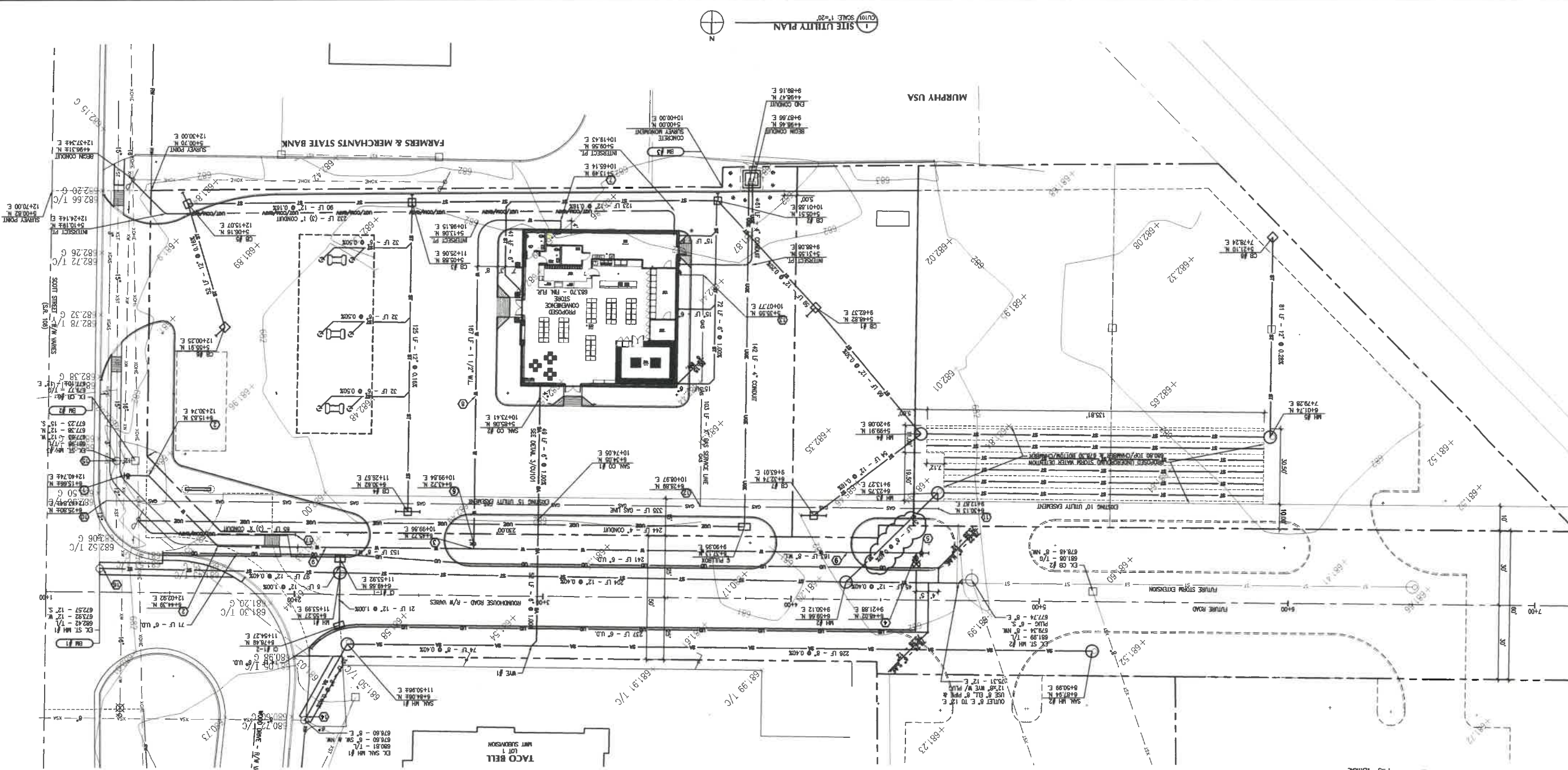
**PROPOSED STORM STRUCTURE SCHEDULE**  
 MARK STRUCTURE CASTING INVERT ELEVATION NOTES  
 EX MH #1 4" DIAM. 882.42 875.32 875.32 REMOVE 10" GROUT MH VERIFY INV., REMOVE CORE FOR 12" W.  
 MH #1 ODOT #3 881.16 877.15 877.15 12" W. & E.  
 MH #2 ODOT #3 882.07 877.30 877.30 12" W. & E.  
 MH #3 ODOT #3 882.57 878.40 878.40 12" W. & E.  
 MH #2 4" DIAM. 881.99 877.74 877.74 PLUG 12" W.  
 MH #1 2" CD101 881.02 877.15 877.15 12" N.  
 CI #1-2 2" CD101 881.02 877.46 877.46 6" N.  
 MH #4 ODOT #3 882.48 878.75 878.75 12" NE.  
 EX MH #1 4" DIAM. 881.71 879.18 879.18 12" SE & NW.  
 CB #1 ODOT 2-28 MOD. 881.70 879.20 879.20 12" S.  
 CB #2 ODOT 2-28 MOD. 882.20 879.28 879.28 4" S.  
 CB #3 ODOT 2-28 MOD. 882.00 879.48 879.48 4" S.  
 CB #4 ODOT 2-28 MOD. 881.74 879.88 879.88 4" W. & E.  
 CB #5 ODOT 2-28 MOD. 881.70 879.20 879.20 12" S.  
 CB #6 ODOT 2-28 MOD. 882.10 879.20 879.20 12" S.  
 CB #7 ODOT 2-28 MOD. 881.44 879.34 879.34 4" E. & W.  
 MH #5 ODOT #3 882.30 879.34 879.34 12" N.  
 CB #8 ODOT 2-28 MOD. 882.30 879.34 879.34 12" N.  
 CB #9 ODOT 2-28 MOD. 881.90 879.04 879.04 12" N.  
 CB #10 ODOT 2-28 MOD. 882.30 879.34 879.34 12" N.

**GENERAL STRIPING AND SIGNAGE NOTES**  
 1. SIGN NUMBERS REFER TO OHIO MANUAL OF INSTRUCTIONS FOR TRAFFIC CONTROL DEVICES (OUMT) DESIGNATIONS.  
 2. WIDE LINE AT PERMETER AND DIAGONAL (35" O.C.), PAINT YELLOW.  
 3. INTERIOR ACCESSIBLE SYMBOL, PAINT 4" BORDER AND SYMBOL BLUE ON WHITE BACKGROUND.  
 4. WIDE LINE AT PERMETER AND DIAGONAL (35" O.C.), PAINT YELLOW.  
 5. ACCESSIBLE PARKING SIGN, SEE DETAIL 6/CP102.  
 6. DETECTABLE WARNING SURFACE, WITH AS INDICATED, 24" D, PER DETAIL 7/CP102 & 8/CP102.  
 7. RELOCATED SIGN PER KEYNOTE 8/CP102.  
 8. 24" WIDE STOP BAR, PAINT WHITE.  
 9. SIGN (R1-1-30), SEE DETAIL 9/CP102.  
 10. 6" WIDE LINE, CROSS WALK LINES, PAINT YELLOW.  
 11. STORE SIGN BY OTHERS.

**ROAD SIGN DETAIL**  
 SCALE 1/2"=1'-0"  
 REFLECTIVE FINISH WITH SIGN PLATED BOLTS, NUTS AND WASHERS. (SIGN TYPE AND SIZE SHALL BE PER M/3/CP102)  
 STEEL U-CHANNEL SIGN POST, FIELD PAINT  
 7'-0" MIN. WALKERS PER LOCATION  
 3'-0" MIN. WALKERS  
 DETECTABLE WARNING SURFACE PER DETAIL 8/CP102  
 FACE OF CURB  
 BACK OF CURB  
 2'-0" MIN. WALKERS PER LOCATION

**NOTE: SANITARY MANHOLES AND STORM MANHOLES #3, 4 AS SHOWN SHALL BE PLAT TOP TYPE WITH 4" INSIDE DIAMETER AND INVERT ELEVATION.**  
 STORM AND SANITARY INVERTS NOTED VERIFY INVERTS PRIOR TO BEGINNING PIPE CONSTRUCTION. REPORT EXISTING PIPE MATERIAL, REPORTED TO ARCHITECT PRIOR TO BEGINNING PIPE CONSTRUCTION.  
 ODOT STANDARD #3  
 ODOT STANDARD #4  
 ODOT STANDARD #5  
 ODOT STANDARD #6  
 ODOT STANDARD #7  
 ODOT STANDARD #8  
 ODOT STANDARD #9  
 ODOT STANDARD #10  
 ODOT STANDARD #11  
 ODOT STANDARD #12  
 ODOT STANDARD #13  
 ODOT STANDARD #14  
 ODOT STANDARD #15  
 ODOT STANDARD #16  
 ODOT STANDARD #17  
 ODOT STANDARD #18  
 ODOT STANDARD #19  
 ODOT STANDARD #20  
 ODOT STANDARD #21  
 ODOT STANDARD #22  
 ODOT STANDARD #23  
 ODOT STANDARD #24  
 ODOT STANDARD #25  
 ODOT STANDARD #26  
 ODOT STANDARD #27  
 ODOT STANDARD #28  
 ODOT STANDARD #29  
 ODOT STANDARD #30  
 ODOT STANDARD #31  
 ODOT STANDARD #32  
 ODOT STANDARD #33  
 ODOT STANDARD #34  
 ODOT STANDARD #35  
 ODOT STANDARD #36  
 ODOT STANDARD #37  
 ODOT STANDARD #38  
 ODOT STANDARD #39  
 ODOT STANDARD #40  
 ODOT STANDARD #41  
 ODOT STANDARD #42  
 ODOT STANDARD #43  
 ODOT STANDARD #44  
 ODOT STANDARD #45  
 ODOT STANDARD #46  
 ODOT STANDARD #47  
 ODOT STANDARD #48  
 ODOT STANDARD #49  
 ODOT STANDARD #50  
 ODOT STANDARD #51  
 ODOT STANDARD #52  
 ODOT STANDARD #53  
 ODOT STANDARD #54  
 ODOT STANDARD #55  
 ODOT STANDARD #56  
 ODOT STANDARD #57  
 ODOT STANDARD #58  
 ODOT STANDARD #59  
 ODOT STANDARD #60  
 ODOT STANDARD #61  
 ODOT STANDARD #62  
 ODOT STANDARD #63  
 ODOT STANDARD #64  
 ODOT STANDARD #65  
 ODOT STANDARD #66  
 ODOT STANDARD #67  
 ODOT STANDARD #68  
 ODOT STANDARD #69  
 ODOT STANDARD #70  
 ODOT STANDARD #71  
 ODOT STANDARD #72  
 ODOT STANDARD #73  
 ODOT STANDARD #74  
 ODOT STANDARD #75  
 ODOT STANDARD #76  
 ODOT STANDARD #77  
 ODOT STANDARD #78  
 ODOT STANDARD #79  
 ODOT STANDARD #80  
 ODOT STANDARD #81  
 ODOT STANDARD #82  
 ODOT STANDARD #83  
 ODOT STANDARD #84  
 ODOT STANDARD #85  
 ODOT STANDARD #86  
 ODOT STANDARD #87  
 ODOT STANDARD #88  
 ODOT STANDARD #89  
 ODOT STANDARD #90  
 ODOT STANDARD #91  
 ODOT STANDARD #92  
 ODOT STANDARD #93  
 ODOT STANDARD #94  
 ODOT STANDARD #95  
 ODOT STANDARD #96  
 ODOT STANDARD #97  
 ODOT STANDARD #98  
 ODOT STANDARD #99  
 ODOT STANDARD #100





**GENERAL UTILITY NOTES**

- ALL CONTRACTORS SHALL PROVIDE AS BUILT DRAWINGS WITHIN TWO WEEKS OF SUBSEQUENT CONSTRUCTION.
- VERIFY LOCATION OF EXISTING PIPES AND INTERFERE GROUP PER CONNECTION WITH INSTALLER AND ARCHITECT. DRAWINGS FROM TO INSTALLING STORM DRAINAGE LINES SUBJECT TO BUREAU ENGINEER'S REVIEW. ELEVATION AT BUILDING SHALL BE 3' MINIMUM BELOW FINAL GRADE. WHEN SLOPE IS NOT SHOWN ON 6\"/>

**BENCH MARK INFORMATION**

- BM #1: 662.42 = TOP OF UN EX. MH #1
- BM #2: 678.77 = TOP OF GREAT EXISTING CATCH BASIN #6
- BM #3: 681.74 = PIVOT POINT (1\"/>

**KEYNOTE LEGEND**

- NOTE: ALL WATER, STORM AND SANITARY LINE MATERIALS & CONSTRUCTION SHALL BE PER DEPA AND CITY OF NAPOLEON SPECIFICATIONS AND STANDARDS.
- CONSTRUCT 16\"/>



**BELLHARZ ARCHITECTS INCORPORATED**

ISSUE DATE: 05-28-21 FOR CITY REVIEW  
07-01-21 PERMIT DRAWINGS  
08-13-21 STORM WATER PLAN

FOR SHEET SIZE 24"x36"  
1"=20'  
0 10' 20' 30'

© 2021 BELLHARZ ARCHITECTS, INC.  
NO REUSE OR REPRODUCTION OF THIS DRAWING OR ANY PART THEREOF WITHOUT THE WRITTEN PERMISSION OF BELLHARZ ARCHITECTS, INC. ANY REUSE OR REPRODUCTION OF THIS DRAWING FOR ANY OTHER PROJECT OR PURPOSE WITHOUT THE WRITTEN PERMISSION OF BELLHARZ ARCHITECTS, INC. IS STRICTLY PROHIBITED.



701-1 / 2 WEST FIRST STREET • DEFIANCE • OHIO • 43512 • PHONE • 419-782-6211 • architects@bellharzinc.com

**MAIN STOP - STORMWATER**  
3/3  
8.12.21

Determine impervious to runoff volume due to site development.

PERVIOUS IMPERVIOUS AC, AC.  
Fie DEVELOPMENT C<sub>d</sub> = 0.20 (See Pg. 2)  
Fie DEVELOPMENT C<sub>d</sub> = 0.81 (See Bllw)

PERVIOUS IMPERVIOUS AC.  
A 0.8272 0.4445 0.3027  
B 0.8205 0.5701 0.2404  
TOTAL 1.6477 1.0126 0.6051  
TOTAL 1.6477 1.0126 0.6051

PERVIOUS IMPERVIOUS AC.  
A 0.8272 0.4445 0.3027  
B 0.8205 0.5701 0.2404  
TOTAL 1.6477 1.0126 0.6051  
TOTAL 1.6477 1.0126 0.6051

PERVIOUS IMPERVIOUS AC.  
A 0.8272 0.4445 0.3027  
B 0.8205 0.5701 0.2404  
TOTAL 1.6477 1.0126 0.6051  
TOTAL 1.6477 1.0126 0.6051

**PERVIOUS IMPERVIOUS AC.**

PERVIOUS IMPERVIOUS AC.  
A 0.8272 0.4445 0.3027  
B 0.8205 0.5701 0.2404  
TOTAL 1.6477 1.0126 0.6051  
TOTAL 1.6477 1.0126 0.6051

PERVIOUS IMPERVIOUS AC.  
A 0.8272 0.4445 0.3027  
B 0.8205 0.5701 0.2404  
TOTAL 1.6477 1.0126 0.6051  
TOTAL 1.6477 1.0126 0.6051

**PERVIOUS IMPERVIOUS AC.**

PERVIOUS IMPERVIOUS AC.  
A 0.8272 0.4445 0.3027  
B 0.8205 0.5701 0.2404  
TOTAL 1.6477 1.0126 0.6051  
TOTAL 1.6477 1.0126 0.6051

PERVIOUS IMPERVIOUS AC.  
A 0.8272 0.4445 0.3027  
B 0.8205 0.5701 0.2404  
TOTAL 1.6477 1.0126 0.6051  
TOTAL 1.6477 1.0126 0.6051

SIZE RAINFALL FOR 15 MIN. STORAGE

120	1.35	"	1.19	"	0.97	6984
60	2.2	"	2.31	"	2.09	7524
30	3.5	"	3.51	"	2.49	7470
15	5.0	"	3.97	"	3.15	7560
10	5.6	"	4.21	"	3.58	7578
5	4.3	"	5.01	"	4.87	7305
2.5	4.5	"	6.36	"	5.54	6448
1.5	5.0	"	7.41	"	6.59	5931
1.0	5.8	"	9.00	"	8.18	4908

TIME: CRITICAL C<sub>d</sub> A CALCULATED DEMAND STORAGE STORAGE  
MIN. STORAGE MAXIMUM BEQ. VOLUME  
I = 50%  
C<sub>d</sub> = 0.84 A = 1576 AC C<sub>d</sub> = C<sub>d</sub>A

PERVIOUS IMPERVIOUS AC.

PERVIOUS IMPERVIOUS AC.	PERVIOUS IMPERVIOUS AC.	PERVIOUS IMPERVIOUS AC.
A 0.8272 0.4445 0.3027	B 0.8205 0.5701 0.2404	TOTAL 1.6477 1.0126 0.6051
TOTAL 1.6477 1.0126 0.6051	TOTAL 1.6477 1.0126 0.6051	TOTAL 1.6477 1.0126 0.6051

PERVIOUS IMPERVIOUS AC.

PERVIOUS IMPERVIOUS AC.	PERVIOUS IMPERVIOUS AC.	PERVIOUS IMPERVIOUS AC.
A 0.8272 0.4445 0.3027	B 0.8205 0.5701 0.2404	TOTAL 1.6477 1.0126 0.6051
TOTAL 1.6477 1.0126 0.6051	TOTAL 1.6477 1.0126 0.6051	TOTAL 1.6477 1.0126 0.6051